

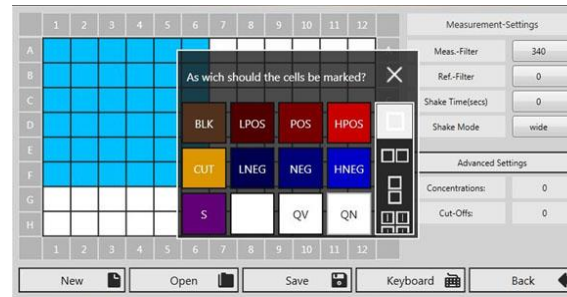
As **Capture96** allows controlling of the LEDetect96 and determination of raw data and may be translated in any language

Capture96 pro furthermore lets you create methods for calculations of

- qualitative measurement
- quantitative measurement (curve-fitting concentration calculation) as linear, quadratic, cubic and logit-log regression
- concentration results as graph and spreadsheet
- methods results can be stored, loaded and exported

Capture96 pro corresponds to CFR21-11 requirements for digital security

Creating a method:



A defined method layout for quantitative measurements with 7 standards, blanks and 40 samples:

	1	2	3	4	5	6	7	8	9	10	11	12	
A	S	S	QN	QN	QN	QN	QN	QN	QN	QN	QN	QN	A
B	S	S	QN	QN	QN	QN	QN	QN	QN	QN	QN	QN	B
C	S	S	QN	QN	QN	QN	QN	QN	QN	QN	QN	QN	C
D	S	S	QN	QN	QN	QN	QN	QN	QN	QN	QN	QN	D
E	S	S	QN	QN	QN	QN	QN	QN	QN	QN	QN	QN	E
F	S	S	QN	QN	QN	QN	QN	QN	QN	QN	QN	QN	F
G	S	S	QN	QN	QN	QN	QN	QN	QN	QN	QN	QN	G
H	BLK	BLK	QN	QN	QN	QN	QN	QN	QN	QN	QN	QN	H
	1	2	3	4	5	6	7	8	9	10	11	12	

Result table of a method with 72 qualitative samples:

	1	2	3	4	5	6	7	8	9	10	11	12	
A	-0.0027	-0.0024	-0.0022	HPOS	POS	LPOS	LNEG	-0.0014	NEG	HNEG	BLK	-0.0001	A
B	-0.0025	-0.0022	-0.0020	HPOS	POS	LPOS	LNEG	-0.0011	NEG	HNEG	BLK	0.00015	B
C	QV 1	QV 7	QV 13	QV 19	QV 25	QV 31	QV 37	QV 43	QV 49	QV 55	QV 61	QV 67	C
D	-0.0024	-0.0021	-0.0018	-0.0017	-0.0014	-0.0012	-0.0010	-0.0008	-0.0005	4.99999	0.00025	0.00025	D
E	-0.0026	-0.0024	-0.0021	-0.0019	-0.0017	-0.0015	-0.0013	-0.0011	-0.0008	-0.0004	-0.0002	NEG	E
F	-0.0026	-0.0023	-0.0021	-0.0019	-0.0017	-0.0016	-0.0014	-0.0012	-0.0010	-0.0005	-0.0003	-0.0003	F
G	-0.0025	-0.0022	-0.0020	-0.0017	-0.0015	-0.0014	-0.0012	-0.0009	-0.0007	-0.0002	-0.0001	-0.0000	G
H	-0.0028	-0.0024	-0.0022	-0.0019	-0.0018	-0.0017	-0.0015	-0.0013	-0.0010	-0.0006	-0.0004	NEG	H
	1	2	3	4	5	6	7	8	9	10	11	12	

Result plot and data for this method:

